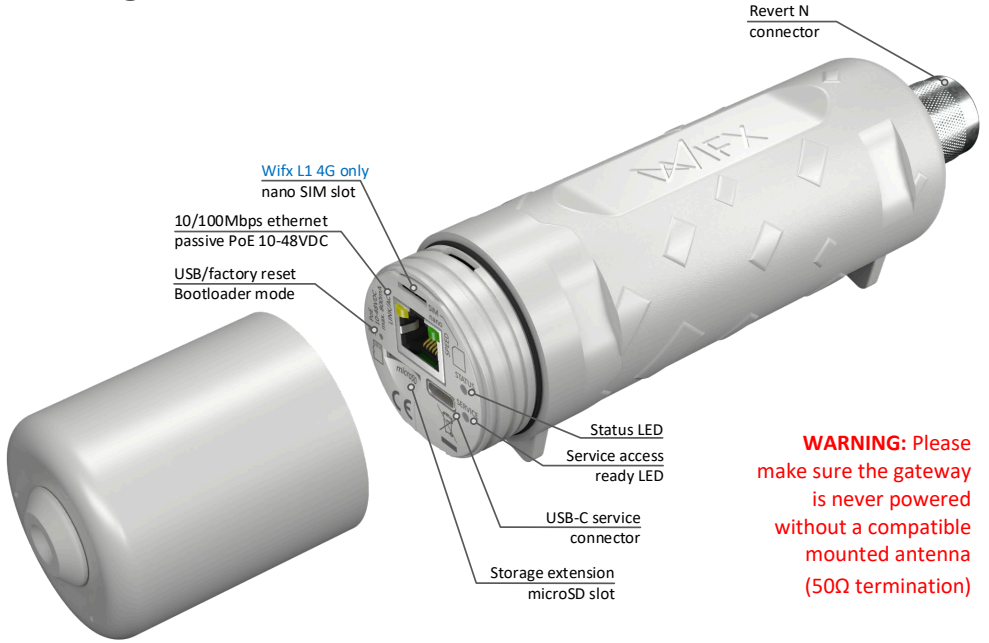


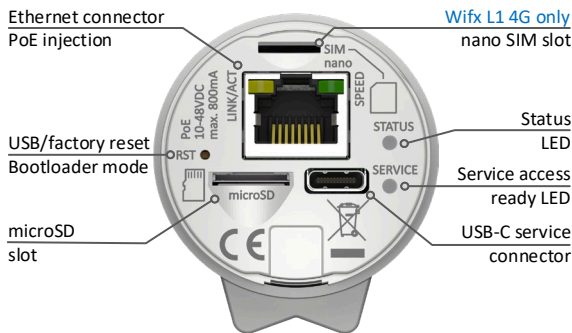
Quick start guide



INTRODUCTION

Thank you for purchasing the Wifx L1/Wifx L1 4G outdoor LoRaWAN® gateway. This quick start guide is made to help you quickly install and use your product. It includes in addition the warranty terms.

OVERVIEW



CONTENT

The package contains:

- Wifx L1 or Wifx L1 4G LoRaWAN® gateway
- UV resistant zip ties (x2)
- Passive PoE injector
- 24VDC/12W switching adapter HNP12-240L6
- LoRa® band antenna
- Quick start guide

ONLINE DOCUMENTATION
documentation can be found at
iot.wifx.net/docs/go/help/start

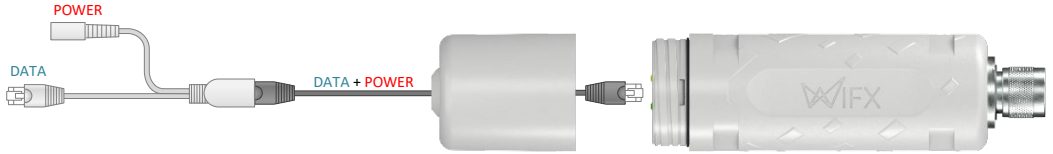


INSTALLATION AND CONSTRAINTS

The product is designed to be placed **vertically** with the antenna **upwards**. Mounting the product differently does not ensure waterproofing or could decrease thermal performance. In addition, the product needs the IP65 antenna to be well fixed to guarantee a global IP65 level.

To install it, start by opening the low side cap, remove the cable gland and pass the cable connector through the hole. Once the cable is connected into the Ethernet PoE connector, put back the cap and screw it until it blocks. You can now insert the cable gland around the cable and push it into the hole, the flat side inside the cap. The cable gland assures the sealing reason why it's important to insert it correctly.

Connect the other side cable into the PoE injector (socket side) and the switching adapter into the power socket of the PoE injector. Once the switching adapter is powered up, the LORIX OS starts and is accessible after a minute.



PoE Ethernet port supports 10-48VDC through the injector. Standard PoE (802.3af) is also supported with limitation and may not work with some PSE products.

Alternatively, it can be powered through the USB-C connector for service and initial configuration. The USB cable must not be kept connected during normal use.

ACCESSING THE CONFIGURATION TERMINAL

The product is accessible either by SSH using its Ethernet port or by USB using a USB-C cable. Regardless the way you access it, the login is **admin** and the password is **lorix4u**.

USING SSH

The product is configured as a DHCP client by default. You need a DHCP server in your network to attribute a correct IP address. Please consult our online documentation for static IP access configuration (see our [LAN and WWAN Configuration](#) section).

Power up your product and access it by using the IP address given by your DHCP server or using mDNS with the address gw<serial number without “-” and lowercase>.local if your network allows it.

Example for the serial number **150-UX-YZ**, the address is <https://gw150uxyz.local>.

The serial number is located on the back-side sticker of the product.

USING USB

Power up your product and connect a USB cable into the USB-C service connector which will act as virtual COM port with the following parameters: 921600 bauds, 8 data bits, 1 stop, no parity and no flow control.

In Linux, a serial port program like Minicom can be used to access the newly created COM port under **/dev/ttyACMx**.

In Windows 10, the driver will be automatically installed and a virtual COM port is created (can be seen in the Device Manager). A program like Putty can be used to access the COM port named **COMx**.

ETHERNET OVER USB

Since LORIX OS 1.6.0, the USB driver also provides an Ethernet interface aside the virtual COM port on Windows and Linux. **On this interface, the product acts as a DHCP server** allowing you to reach its web interface using the address <https://172.20.20.1> or the mDNS address as specified above <https://gw150uxyz.local>. It's a simple way of setting up the initial network configuration.

FACTORY RESET

A factory RESET will clear all the parameters to their factory value.

This can be made easily by pressing the RESET button for at least 10sec, until the status LED blinks. It will then reboot, restore the default parameters and will be ready after the status LED stops blinking quickly.

CONFIGURATION

Most of the system is protected against wrong manipulation allowing most of commands and files only in root (super admin) mode. Modifications can be made using explicitly the command sudo:

```
gw150uxyz:/$ sudo mkdir /tstdir
```

The password is then asked and kept in cache for 5 minutes.

LAN AND WWAN CONFIGURATION

To change the network configuration, please consult our online documentation at iot.wifx.net/docs/go/networking

CLOUD APPLICATIONS AND SERVICE

By default, the gateway is not configured with any specific packet forwarder. You can easily configure that through the graphical web interface. For more info, you can consult our online documentation at iot.wifx.net/docs/go/forwarding

MORE INFORMATION

Complementary information can be found on our online documentation at iot.wifx.net/docs

RETURN MERCHANDISE AUTHORIZATION

Wifx Sàrl offers a warranty of 24 months (B2C) and 12 months (B2B) for the product starting from the invoice date. The product is warranted to the purchaser to be free of defects in material and workmanship. The warranty does not cover any damage caused by mechanical shocks, electrical shocks, natural disasters or other damages caused by accident or by misuse of the product.

Before returning a damaged item to Wifx Sàrl, please send an email to rma@iot.wifx.net with the MAC address and/or serial number of the gateway and provide as much information as possible concerning the problem. A RMA number will be assigned to you.

Wifx Sàrl does not offer any technical repair on products which are out of the warranty period.

If the warranty of the returned merchandise has expired, Wifx Sàrl will return the merchandise to the customer at his/her own expense. If the customer does not claim the rejected items within 12 months, Wifx Sàrl reserves the right to destroy them.

Please make sure that there is a real problem with the gateway before sending it back. If this is not the case, the customer will have to cover for the shipping expenses and up to 50CHF for testing each gateway if the problem has not been detected.

IMPORTANT NOTICE before returning merchandise makes sure that:

- The warranty is still valid (check the date of the invoice)
- The issue is not caused by software or wrong configuration
- You have received your RMA number for the return by e-mail

The shipping costs for the return of merchandise are at the customer's expense. If the reparation is done under warranty, Wifx Sàrl will return the merchandise to the customer without any additional cost charged. The RMA number must be mentioned on the delivery note. Please include a copy of the invoice to prove that the warranty is still valid. The content of the package must correspond to RMA form's indications otherwise the package will be immediately returned. In this case, the customer will cover the shipping costs.

The returned merchandise must be properly packaged to prevent any damage during transport. Such damage may compromise the integrity of the analytical results and/or invalidate the warranty. Please send the merchandise to the address of the RMA (which will be issued upon approval of your RMA form).

USEFUL DATA

The returned merchandise for repair must be unlocked, or provided with the full password and access information. Based on initial investigations, Wifx support may ask you to send only part of the kit, otherwise, please send the whole kit including accessories.

Please inform us about any modification concerning your company. E-mail: info@iot.wifx.net

For any RMA questions, contact rma@iot.wifx.net

DECLARATION OF CONFORMITY

English	Hereby, Wifx Sàrl, declares that this device, is in compliance with the essential requirements and other relevant provisions of Directive 2014/53/CE. Wifx L1 only: This device complies with Part 15 of the FCC rules and with ICES-003 of industry Canada for a Class A digital apparatus.
Français [French]	Par la présente Wifx Sàrl déclare que l'appareil, est conforme aux exigences essentielles et aux autres dispositions pertinentes de la directive 2014/53/CE. Wifx L1 seulement : Cet appareil est conforme à la section 15 du règlement de la FCC et de l'ICES-003 de l'Industrie Canada pour un appareil numérique de classe A.
Deutsch [German]	Hiermit erklärt Wifx Sàrl, dass sich dieses Gerät, in Übereinstimmung mit den grundlegenden Anforderungen und den anderen relevanten Vorschriften der Richtlinie 2014/53/CE befindet.
Italiano [Italian]	Con la presente, Wifx Sàrl, dichiara che questo dispositivo, è conforme ai requisiti essenziali ed alle altre disposizioni pertinenti della direttiva 2014/53/CE.
Português [Portuguese]	Wifx Sàrl declara que este dispositivo está conforme com os requisitos essenciais e outras disposições da Directiva 2014/53/CE.
Español [Spanish]	Por medio de la presente Wifx Sàrl declara que este dispositivo cumple con los requisitos esenciales y cualesquiera otras disposiciones aplicables o exigibles de la Directiva 2014/53/CE.
Česky [Czech]	Wifx Sàrl tímto prohlašuje, že toto zařízení, je ve shod se základními požadavky a dalšími Příslušnými ustanoveními směrnice 2014/53/CE.
Dansk [Danish]	Hermed, Wifx Sàrl, erklærer at denne enhed, er i overensstemmelse med de væsentlige krav og øvrige relevante krav i direktiv 2014/53/CE.
Nederlands [Dutch]	Hierbij verklaart Wifx Sàrl, dat dit apparaat, in overeenstemming is met de essentiële Eisen en de andere relevante bepalingen van richtlijn 2014/53/CE.
Eesti [Estonian]	Käesolevaga Wifx Sàrl kinnitab, et antud seade, on vastavus oluliste nõuetele ja teistele asjakohastele sätetele direktiivi 2014/53/CE.
Suomi [Finnish]	Täten Wifx Sàrl vakuuttaa, että tämä laite, on yhdenmukainen olennaisten vaatimusten ja muiden sitä koskevien direktiivin 2014/53/CE.
Ελληνική [Greek]	Δια του παρόντος, Wifx Sàrl, δηλώνει ότι αυτή η συσκευή είναι σε συμμόρφωση με τις βασικές απαιτήσεις και τις λοιπές σχετικές διατάξεις της οδηγίας 2014/53/CE.
Magyar [Hungarian]	Ezennel Wifx Sàrl kijelenti, hogy ez a készülék megfelel az alapvető követelményeknek és más vonatkozó 2014/53/CE irányelv rendelkezéseit.
Íslenska [Icelandic]	Hér, Wifx Sàrl, því yfir að þetta tæki er í samræmi við grunnkröfur og önnur viðeigandi ákvæði tilskipun 2014/53/CE.
Latviski [Latvian]	Ar šo, Wifx Sàrl, deklarē, ka ierīce, ir saskaņā ar būtiskajām prasībām un citiem attiecīgiem noteikumiem Direktīvā 2014/53/CE.
Lietuviškai [Lithuanian]	Wifx Sàrl deklaruoja, kad šis įrenginys atitinka esminius reikalavimus ir kitas 2014/53/CE Direktyvos nuostatas.
Malti [Maltese]	Hawnhekk, Wifx Sàrl, tiddikjara li dan il-mezz huwa konformi mar-rekwiżiti essenzjali u dispożizzjonijiet rilevanti oħraġn ta 'Direttiva 2014/53/CE.
Norsk [Norwegian]	Herved Wifx Sàrl, erklærer at denne enheten, er i samsvar med de grunnleggende kravene og andre relevante bestemmelser i direktiv 2014/53/CE.
Polski [Polish]	Niniejszym, Wifx Sàrl, oświadczam, że urządzenie jest zgodny z zasadniczymi wymaganiami oraz pozostałymi stosownymi postanowieniami Dyrektywy 2014/53/CE.
Română [Romanian]	Prin prezenta, Wifx Sàrl declară că acest dispozitiv este în conformitate cu cerințele esențiale și alte prevederi relevante ale Directivei 2014/53/CE.
Slovensky [Slovak]	Týmto Wifx Sàrl, prehlasuje, že toto zariadenie, je v súlade so základnými požiadavkami a ďalšími relevantnými ustanoveniami smernice 2014/53/CE.
Svenska [Swedish]	Härmed Wifx Sàrl, intygar att denna enhet är i överensstämmelse med de väsentliga egenskapskrav och övriga relevanta bestämmelser som framgår av direktiv 2014/53/CE.

SAFETY NOTE

This equipment is not suitable for use in locations where children are likely to be present.